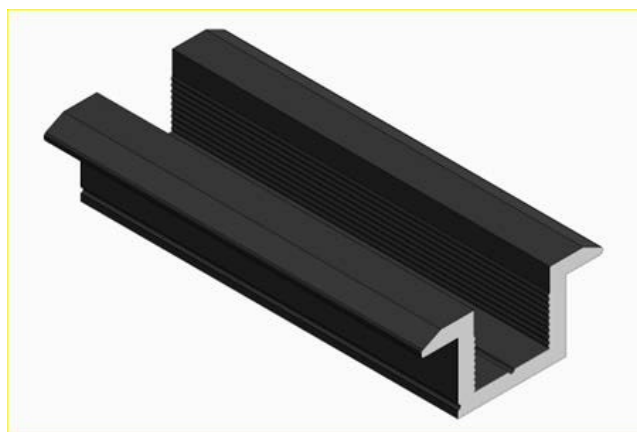
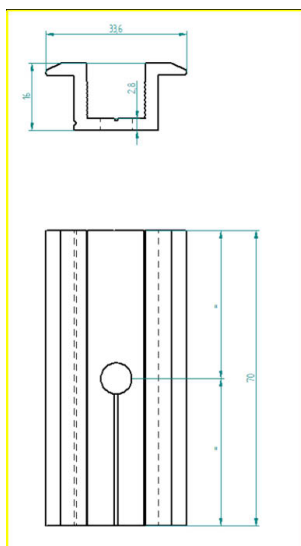


Middle Clamp 30mm - 35 mm

Product sheet



Technical Details

Material	<i>Aluminium EN-AW 6063 T66 (or similar)</i>
Structural Design	<i>The attachment of middle clamp brackets is a crucial step in the installation of photovoltaic solar panels. They serve to secure the solar modules in place, ensuring their stability and optimal performance over time. By affixing the middle clamp brackets securely, we enhance the structural integrity of the solar array, providing reliable support for the panels while also facilitating efficient energy generation from sunlight.</i>
Warranty	<i>10 years according to our Guarantee Terms and Conditions.</i>
Length	<i>70 mm</i>
Height	<i>30 mm - 35 mm</i>
Width	<i>33.6 mm</i>
Weight	<i>30 mm 31 gr - 35 mm 40 gr</i>
Colour	<i>Black or Silver</i>

V1 PRODUCT SHEET